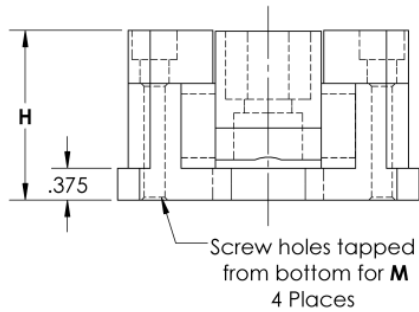
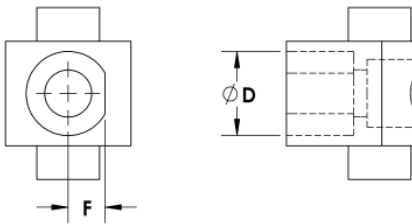
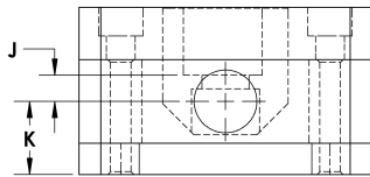
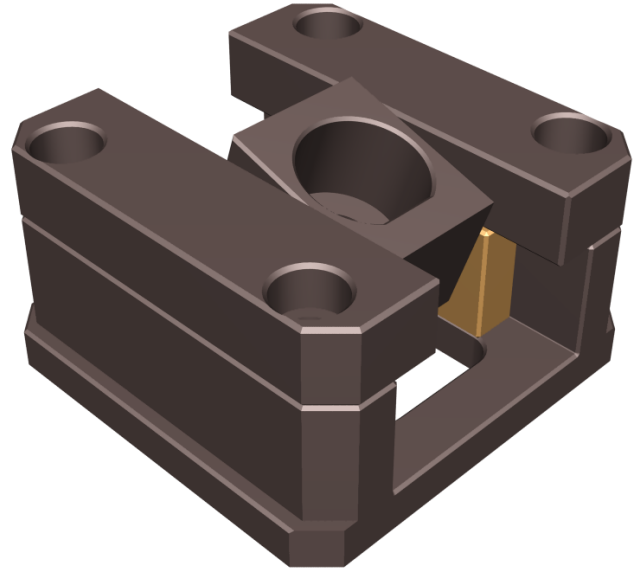
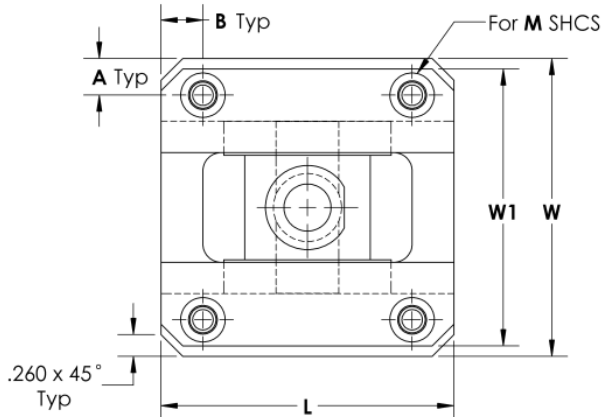


- Reduces Build Time!
- Accommodates lifter rod angles up to 30 degrees
- Available with or without graphite



**Materials:** Bearing Block: Aluminum Bronze; 4140 Rc 28-32

**Tolerances:** L, W, H: +0/-.010; All Other: +/- .005

Code	Lifter Rod			Base								
	D (dia)	F (flat)	Screw	W	W1	L	A	B	M	J	K	H
TGA22284	0.500	0.190	1/4	2.189	1.939	3.000	0.345	0.5	#10	0.265	0.734	1.507
TGA26286	0.750	0.315	3/8	2.889	2.701	3.250	0.363	0.5	1/4	0.240	0.859	1.757
TGA28288	1.000	0.440	1/2	3.562	3.312	3.500	0.438	0.5	5/16	0.313	0.875	2.008

**Catalog Number:**

TGA28288

G

Code

G = Graphite; Blank = Grease Dimples/ No Graphite