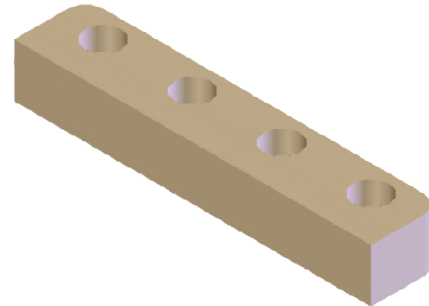
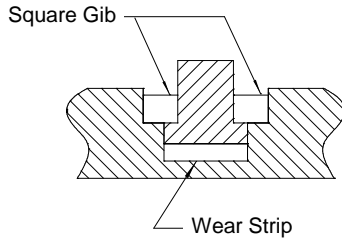


Application Example



Ordering Note: Order by catalog number with one or more suffixes to indicate type:

- G** - w/Graphite Plugs
- N** - no mounting holes
- S** - Steel (not available with Graphite Plugs or in 12SG sizes)

Example: 6SG64NG = no holes, w/graphite
 6SG64 = holes, no graphite
 6SG64NS = no holes, steel, no graphite
 6SG64S = holes, steel, no graphite

Materials: Aluminum Bronze w/Graphite Plugs; 4140 Rc 28-32 no graphite

Tolerances: Flatness/Squareness: .003; Width, Height: +.005/-0; All Other: +/- .010

Catalog Number	L	W	T	A	B	C	D	E	F	M	N	G
6SG32G	4.00	1.00	0.75	1.00	2.00	3.00				.625	3/8	.39
6SG40G	5.00				2.50	4.00						
6SG48G	6.00				3.00	5.00						
6SG64G	8.00				3.00	5.00	7.00					
6SG80G	10.00				3.00	5.00	7.00	9.00				
6SG96G	12.00				3.00	5.00	7.00	9.00	11.00			
6SG96NG	12.00	No Mounting Holes										
8SG32G	4.00	1.25	1.00	1.00	2.00	3.00				.875	3/8	.62
8SG40G	5.00				2.50	4.00						
8SG48G	6.00				3.00	5.00						
8SG64G	8.00				3.00	5.00	7.00					
8SG80G	10.00				3.00	5.00	7.00	9.00				
8SG96G	12.00				3.00	5.00	7.00	9.00	11.00			
8SG96NG	12.00	No Mounting Holes										
12SG64G	8.00	2.00	1.50	1.50	4.00	6.50				1.25	5/8	.86
12SG80G	10.00			1.25	3.75	6.25	8.75					
12SG96G	12.00			1.50	4.50	7.50	10.50					
12SG96NG	12.00			No Mounting Holes								